





Overview

System controls & switchgears is one of the fastest growing companies in India. Established in 1983, a privately owned company has unrivalled experience in the distribution of electrical products. SCS business covers a broad range of Medium Voltage Switchgears, Low Voltage Switchgears, Power Capacitors, Internal wiring accessories, Lighting, Metal Detectors, Energy Management Products and other products. Over the last 3 decades history, we've developed strong relationships with customers. Our strength lives in all of our people, who have extended our tradition of service and integrity to customers in every location and situation, and who take pride in making us one of the most resilient resources in the products we deal.

Type VAJ relays are fast operating multi-contact attracted armature relays with a high degree of mechanical stability and are suitable for control duties where a number of simultaneous switching operations are required. Control relays generally have lower burdens than tripping relays and are used for applications such as starting and shutting down apparatus in automatic stations.

OLD RELAY- VAJC11ZF



| RELAY TYPE | NOMINAL OPERATING BURDEN (In Watts) | MAXIMUM BURDEN OPERATED (In Watts) | NOMINAL RESET COIL BURDEN (In Watts) | MAXIMUM OPERATING TIME (In milliseconds) |
|------------|--------------------------------------|-------------------------------------|---------------------------------------|--|
| VAJC 11 | 20 | 0 | 20 | 25 |

| NUMBER OF PAIRS OF CONTACTS | CASE SIZE AND TYPE | MAXIMUM OVERALL DIMENSIONS (mm) | | | MAXIMUM NUMBER OF TERMINALS |
|-----------------------------|--------------------|---------------------------------|----------|-----------|-----------------------------|
| | | Height mm | Width mm | Depth* mm | |
| 8 | 1/2 N | 153 | 124 | 152 | 20 |

Dimension Details

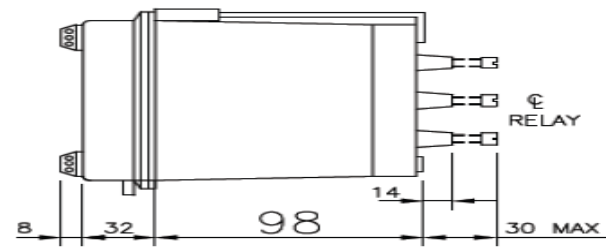
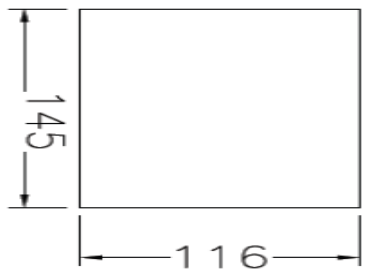
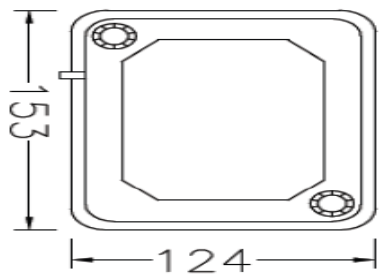


Figure 1 : Case and panel cut-out dimensions for case 1/2 N Ver. (all dimensions in mm)



This is an electrically reset control relay. The relay is meant for switching the secondary circuits of current transformer in busbar protection. Also wherever .latch-in. type of control relay is required for contact multiplication control schemes, relay type MVAJM14 can be employed.

NEW RELAY- MVAJM14



| SL.NO. | RELAY TYPE | STANDARD COIL RATING | NO. OF OUTPUT CONTACTS | STANDARD CONTACT CONFIGURATION | BURDEN |
|--------|------------|---|------------------------|------------------------------------|--------|
| 3 | MVAJM 14 | 48/54V dc 110/125V dc 220/250V dc | 10 | 10M, 8M+2B, 6M+4B, 4M+6B, 2M+8B | 20W |

| SL. NO. | RELAY TYPE | CONTACT MECHANISM | OPERATION INDICATOR FACILITY | CUT-OFF | GROUP | CASE SIZE |
|---------|------------|-------------------|------------------------------|---------------|------------|-----------|
| 3 | MVAJM 14 | E/R | Follow on Flag) | Instantaneous | Low burden | Size 2 |

Cases

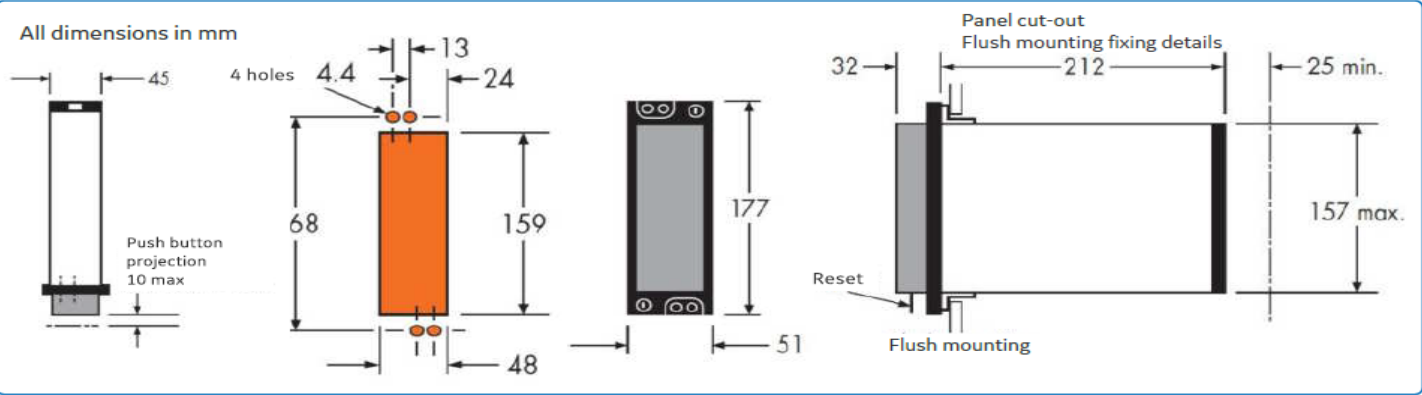


Figure : Case Outline Size 2

| COMBINATIONS OF OUTPUT CONTACTS | | OUTPUT CONTACTS TO TERMINALS | | | | | | | |
|------------------------------------|----|------------------------------|-------|-------|-------|---------|---------|---------|---------|
| | | 1 | | | | 2 | | | |
| | | 1 - 2 | 3 - 4 | 5 - 6 | 7 - 8 | 13 - 14 | 15 - 16 | 17 - 18 | 19 - 20 |
| 8M | - | M | M | M | M | M | M | M | M |
| 7M | 1B | B | M | M | M | M | M | M | M |
| 6M | 2B | B | M | M | M | B | M | M | M |
| 5M | 3B | B | M | B | M | B | M | M | M |
| 4M | 4B | B | M | B | M | B | M | B | M |

CONTACT DESCRIPTION
M : MAKE
B : BREAK

SHUNT RESISTOR WHEN FITTED.

OLD RELAY- VAJC11ZF

NEW RELAY- MVAJM14

CASE EARTH

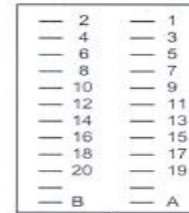


MODULE TERMINAL BLOCK
VIEWED FROM REAR

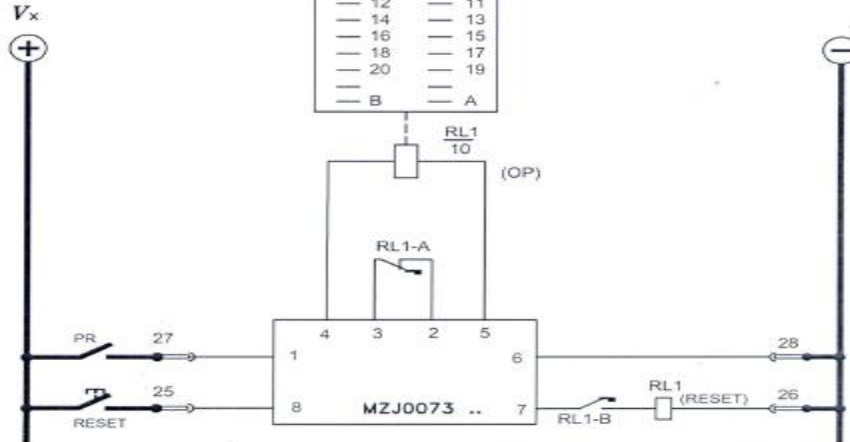
NOTE:
(a) SHORT TERMINALS BREAK BEFORE (c)
(b) LONG TERMINAL

| COMBINATIONS OF OUTPUT CONTACTS | OUTPUT CONTACTS TO MODULE TERMINALS | | | | | | | | | | | | | | | |
|------------------------------------|-------------------------------------|---|---|---|---|----|----|----|----|----|---|---|---|---|----|----|
| | 1 | 3 | 5 | 7 | 9 | 11 | 13 | 15 | 17 | 19 | 2 | 4 | 6 | 8 | 10 | 12 |
| 10M | - | M | M | M | M | M | M | M | M | M | M | M | M | M | M | M |
| 8M | 2B | B | M | M | M | M | M | M | M | M | B | M | M | M | M | M |
| 6M | 4B | B | B | M | M | M | M | M | M | M | B | B | M | M | M | M |
| 4M | 6B | B | B | B | M | M | M | M | M | M | B | B | B | M | M | M |
| 2M | 8B | B | B | B | B | M | M | M | M | M | B | B | B | B | M | M |

VIEWED FROM FRONT



CONTACT DESCRIPTION:
M : MAKE
B : BREAK



❖Disclaimer:-

Info given herein is for ease of understanding. Customized tech info is for specific purpose SCS suggests you to take confirmation on technical details from GE experts SCS does not take responsibility or claim this will suit your needs.



SYSTEM CONTROLS & SWITCHGEARS

Office / Stores : Plot No.8,Block No.A,Naraina Industrial Area, Phase-1, New Delhi-28



Sales@systemcontrols.co. in/ support@systemcontrols.co.in



Sales :- 011-45631915,45631902,09810009036



Support :- 9717143393



011-45631903

www.systemcontrols.co.in / www.powerfactorshop.com